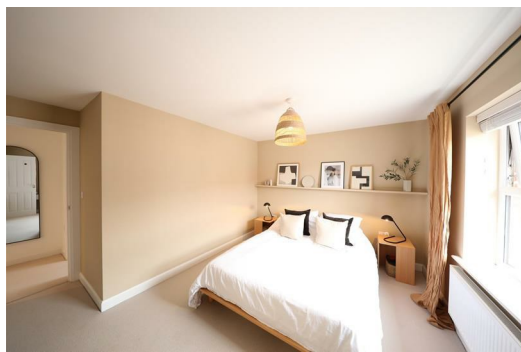




**SYMONDS + GREENHAM**

*Estate and Letting Agents*



## **4 Waudby Close, Hessle, HU13 0QW**

### **£280,000**

*Immaculately Styled Family Home in a Sought-After Hessle Location*

This exceptional three-bedroom semi-detached home sits proudly within a popular modern development, offering stylish, turn-key living ideal for families. Impeccably presented throughout, the property boasts a spacious lounge, a stunning open-plan dining kitchen, and the added convenience of a utility room and downstairs WC.

Upstairs, three well-proportioned bedrooms are served by a contemporary family bathroom, with the principal bedroom enjoying its own sleek en-suite. Outside, the rear garden is perfect for entertaining or relaxing, while driveway parking adds further appeal.

Set within walking distance of well-regarded schools and local parks, and with superb road and rail links via the A63 and Hessle station, this is a fantastic opportunity to secure a home that blends comfort, style, and convenience effortlessly.

#### **CENTRAL HEATING**

The property has the benefit of gas central heating (not tested).

#### **DOUBLE GLAZING**

The property has the benefit of double glazing.

#### **TENURE**

Symonds + Greenham have been informed that this property is Freehold

If you require more information on the tenure of this property please contact the office on 01482 444200.

#### **COUNCIL TAX BAND**

Symonds + Greenham have been informed that this property is in Council Tax Band C

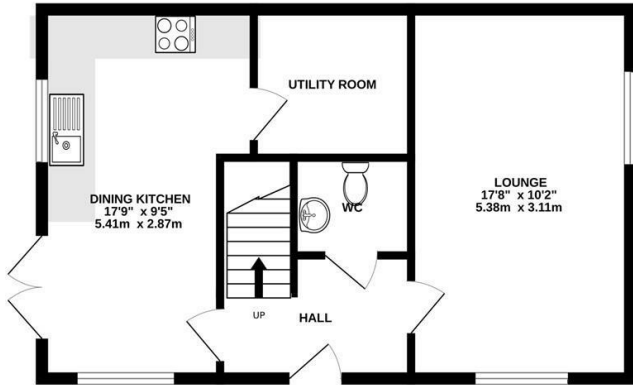
#### **VIEWINGS**

Please contact Symonds + Greenham on 01482 444200 to arrange a viewing on this property.

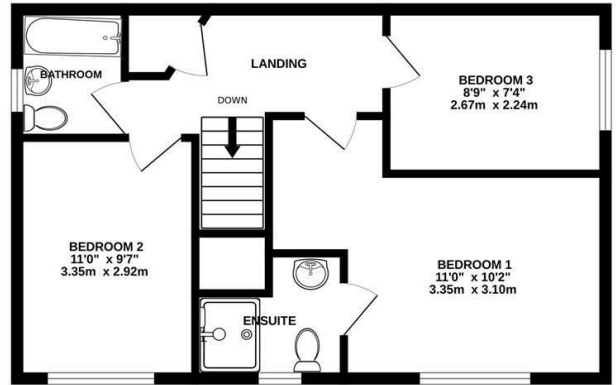
#### **DISCLAIMER**

Symonds + Greenham do their utmost to ensure all the details advertised are correct however any viewer or potential buyer are advised to conduct their own survey prior to making an offer.

GROUND FLOOR  
454 sq.ft. (42.2 sq.m.) approx.



1ST FLOOR  
454 sq.ft. (42.2 sq.m.) approx.



TOTAL FLOOR AREA : 910sq.ft. (84.5 sq.m.) approx.

Whilst every attempt has been made to ensure the accuracy of the floorplan contained here, measurements of doors, windows, rooms and any other items are approximate and no responsibility is taken for any error, omission or mis-statement. This plan is for illustrative purposes only and should be used as such by any prospective purchaser. The services, systems and appliances shown have not been tested and no guarantee as to their operability or efficiency can be given.  
Made with Metropix ©2025

Energy Efficiency Rating		
	Current	Potential
Very energy efficient - lower running costs		
(92 plus) <b>A</b>		<b>95</b>
(81-91) <b>B</b>		
(69-80) <b>C</b>	<b>84</b>	
(55-68) <b>D</b>		
(39-54) <b>E</b>		
(21-38) <b>F</b>		
(1-20) <b>G</b>		
Not energy efficient - higher running costs		
England & Wales		EU Directive 2002/91/EC

Environmental Impact (CO <sub>2</sub> ) Rating	
Current	Potential
Very environmentally friendly - lower CO <sub>2</sub> emissions	
(92 plus) <b>A</b>	<b>95</b>
(81-91) <b>B</b>	
(69-80) <b>C</b>	
(55-68) <b>D</b>	
(39-54) <b>E</b>	
(21-38) <b>F</b>	
(1-20) <b>G</b>	
Not environmentally friendly - higher CO <sub>2</sub> emissions	
<b>England &amp; Wales</b>	EU Directive 2002/91/EC

